

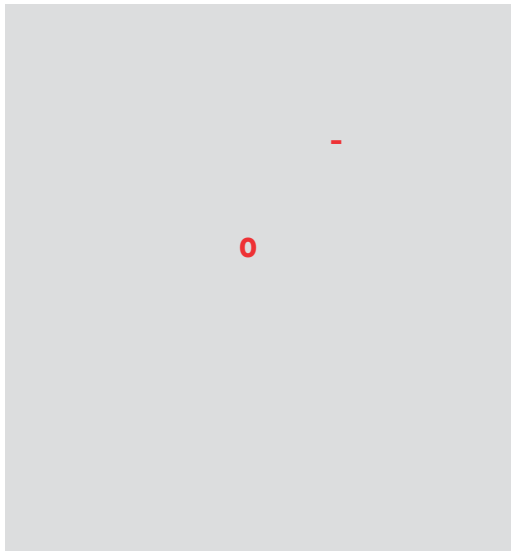


Take the next step.

Graduate science
industry
training place
career advice
one








Contents

- 5 Welcome to UC Science | Nau mai, haere mai ki Te R űngai P űtaiao
- 6 Why postgraduate science?
- 7 Choosing a postgraduate degree
- 8 Discover your world
- 9 Why UC Science?
- 10 Research centres and institutes
- 11 Field stations and research areas
- 12 Our postgraduate science degrees
- 14 Full list of degrees
- 16 A community of minds
- 19

A C Science e k-e r-ide in r- cce f- ano
di e dee r- i- r- et- f- e ea- ch a- e- e- ad ance
in r- ca- ee- ano- o- r- e- r- eno- en i- r-
a- e- k- ing- a- ne challenge e ill hel- o- i-

I 

Why postgraduate science?

Postgraduate study can facilitate career advancement, significantly increase earnings, and provide essential help and support for those who need it. Knowledge in an area is often required in

Business

Business is a highly competitive field where postgraduate study can provide a significant advantage. It can help you develop the skills and knowledge needed to succeed in a variety of roles, from management to sales. Postgraduate study can also help you build a strong network of contacts, which can be invaluable in the business world.

Construction

The construction industry is a highly technical field where postgraduate study can provide a significant advantage. It can help you develop the skills and knowledge needed to succeed in a variety of roles, from project management to engineering. Postgraduate study can also help you build a strong network of contacts, which can be invaluable in the construction world.

Education

Education is a highly competitive field where postgraduate study can provide a significant advantage. It can help you develop the skills and knowledge needed to succeed in a variety of roles, from teaching to research. Postgraduate study can also help you build a strong network of contacts, which can be invaluable in the education world.

Healthcare

Healthcare is a highly competitive field where postgraduate study can provide a significant advantage. It can help you develop the skills and knowledge needed to succeed in a variety of roles, from nursing to research. Postgraduate study can also help you build a strong network of contacts, which can be invaluable in the healthcare world.

Research

Research is a highly competitive field where postgraduate study can provide a significant advantage. It can help you develop the skills and knowledge needed to succeed in a variety of roles, from research assistant to principal investigator. Postgraduate study can also help you build a strong network of contacts, which can be invaluable in the research world.

Industry

Industry is a highly competitive field where postgraduate study can provide a significant advantage. It can help you develop the skills and knowledge needed to succeed in a variety of roles, from project management to engineering. Postgraduate study can also help you build a strong network of contacts, which can be invaluable in the industry world.

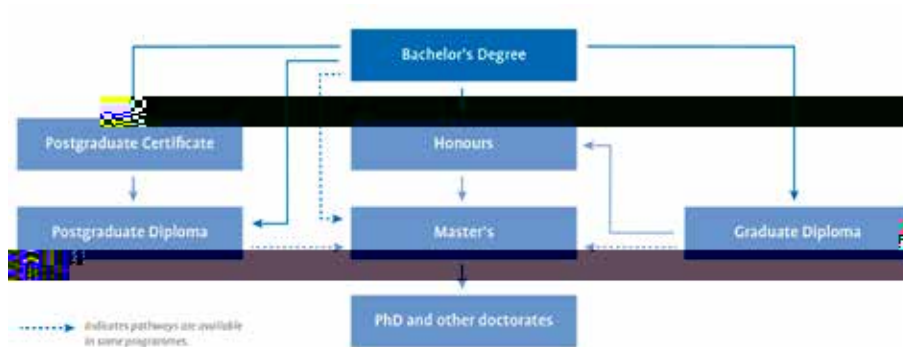
Education

Education is a highly competitive field where postgraduate study can provide a significant advantage. It can help you develop the skills and knowledge needed to succeed in a variety of roles, from teaching to research. Postgraduate study can also help you build a strong network of contacts, which can be invaluable in the education world.

Postgraduate



Choosing a postgraduate degree



D

A postgraduate diploma is a two-year degree that is equivalent to a bachelor's degree. It is a qualification that is awarded to students who have completed a two-year programme of study. It is a qualification that is awarded to students who have completed a two-year programme of study. It is a qualification that is awarded to students who have completed a two-year programme of study.

G

A graduate diploma is a two-year degree that is equivalent to a bachelor's degree. It is a qualification that is awarded to students who have completed a two-year programme of study. It is a qualification that is awarded to students who have completed a two-year programme of study. It is a qualification that is awarded to students who have completed a two-year programme of study.

H

Honours is a qualification that is awarded to students who have completed a three-year programme of study. It is a qualification that is awarded to students who have completed a three-year programme of study. It is a qualification that is awarded to students who have completed a three-year programme of study.

P

A postgraduate certificate is a one-year degree that is equivalent to a bachelor's degree. It is a qualification that is awarded to students who have completed a one-year programme of study. It is a qualification that is awarded to students who have completed a one-year programme of study. It is a qualification that is awarded to students who have completed a one-year programme of study.

M

A master's degree is a two-year degree that is equivalent to a bachelor's degree. It is a qualification that is awarded to students who have completed a two-year programme of study. It is a qualification that is awarded to students who have completed a two-year programme of study. It is a qualification that is awarded to students who have completed a two-year programme of study.

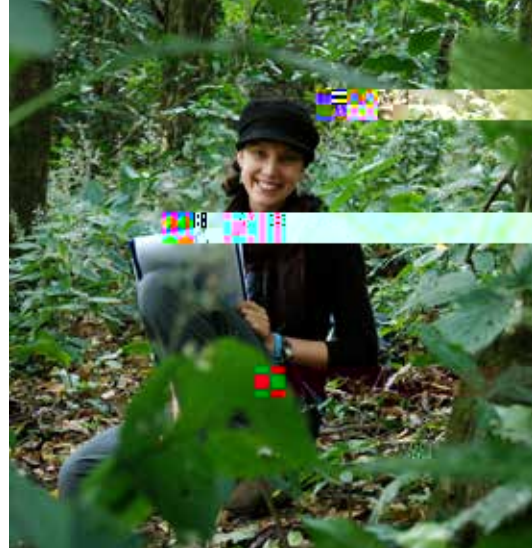
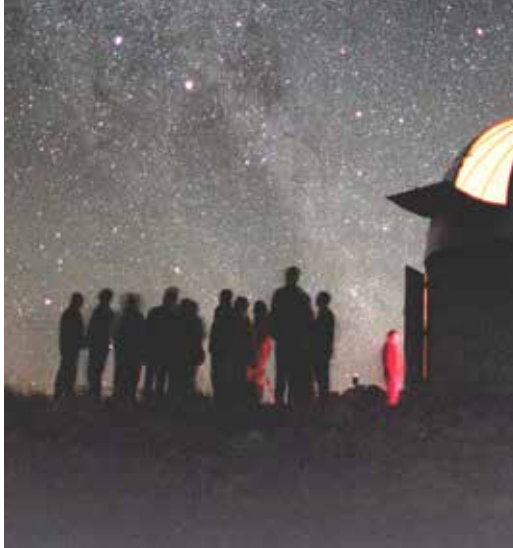
T

A PhD and other doctorates are three-year degrees that are equivalent to a bachelor's degree. They are qualifications that are awarded to students who have completed a three-year programme of study. They are qualifications that are awarded to students who have completed a three-year programme of study.

Further information and resources are available on the university website.

Discover your world

تجدید و نوآوری در صنعت گردشگری
با استفاده از فناوریهای نوین
مانند هوش مصنوعی و واقعیت مجازی
برای بهبود تجربه گردشگران



Research centres and institutes

C Science i
 an o
 rld leading
 e ea, ch cen re and
 in i e he a ac
 high calibre academic
 and e e ci ing e ea, ch
 and k o n i ie
 o g rad a e den

B
I **C**

The research centre is a leading
 international research centre
 in the field of environmental
 science and technology. It
 is a member of the European
 Association of Environmental
 and Symbiotic Societies (EAESS).

T P C
 The research centre is a leading
 international research centre
 in the field of environmental
 science and technology. It
 is a member of the European
 Association of Environmental
 and Symbiotic Societies (EAESS).

G A
 The research centre is a leading
 international research centre
 in the field of environmental
 science and technology. It
 is a member of the European
 Association of Environmental
 and Symbiotic Societies (EAESS).

G R
I T H
 The research centre is a leading
 international research centre
 in the field of environmental
 science and technology. It
 is a member of the European
 Association of Environmental
 and Symbiotic Societies (EAESS).

F C
M
 The research centre is a leading
 international research centre
 in the field of environmental
 science and technology. It
 is a member of the European
 Association of Environmental
 and Symbiotic Societies (EAESS).

R C S
R R
 The research centre is a leading
 international research centre
 in the field of environmental
 science and technology. It
 is a member of the European
 Association of Environmental
 and Symbiotic Societies (EAESS).

The research centre is a leading
 international research centre
 in the field of environmental
 science and technology. It
 is a member of the European
 Association of Environmental
 and Symbiotic Societies (EAESS).

A community of minds

A community of minds
each
science
faculties
of academic
excellence
and
research
in



208



201

201

24/

‘I want to help make sure our people, wh nau, and communities are prepared and resilient to natural hazards and climate change.’



‘Regardless of your circumstances – persistence, hard work and confidence can get you where you want to go.’



